

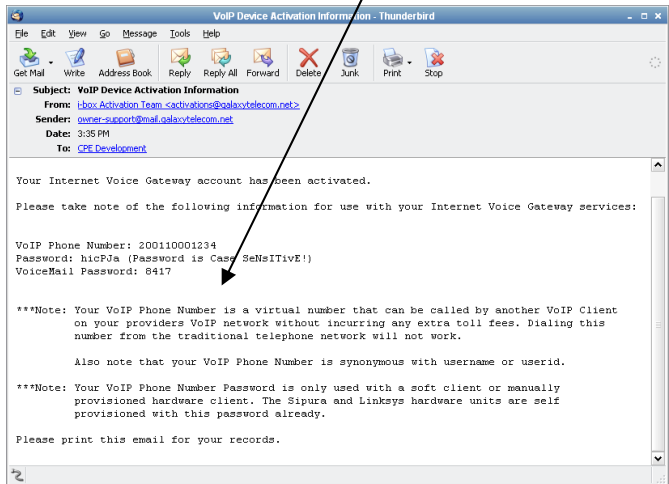
Softphone

Quick Installation Guide

Follow these quick steps to configure your softphone

1 Activation E-mail

- Locate your activation email



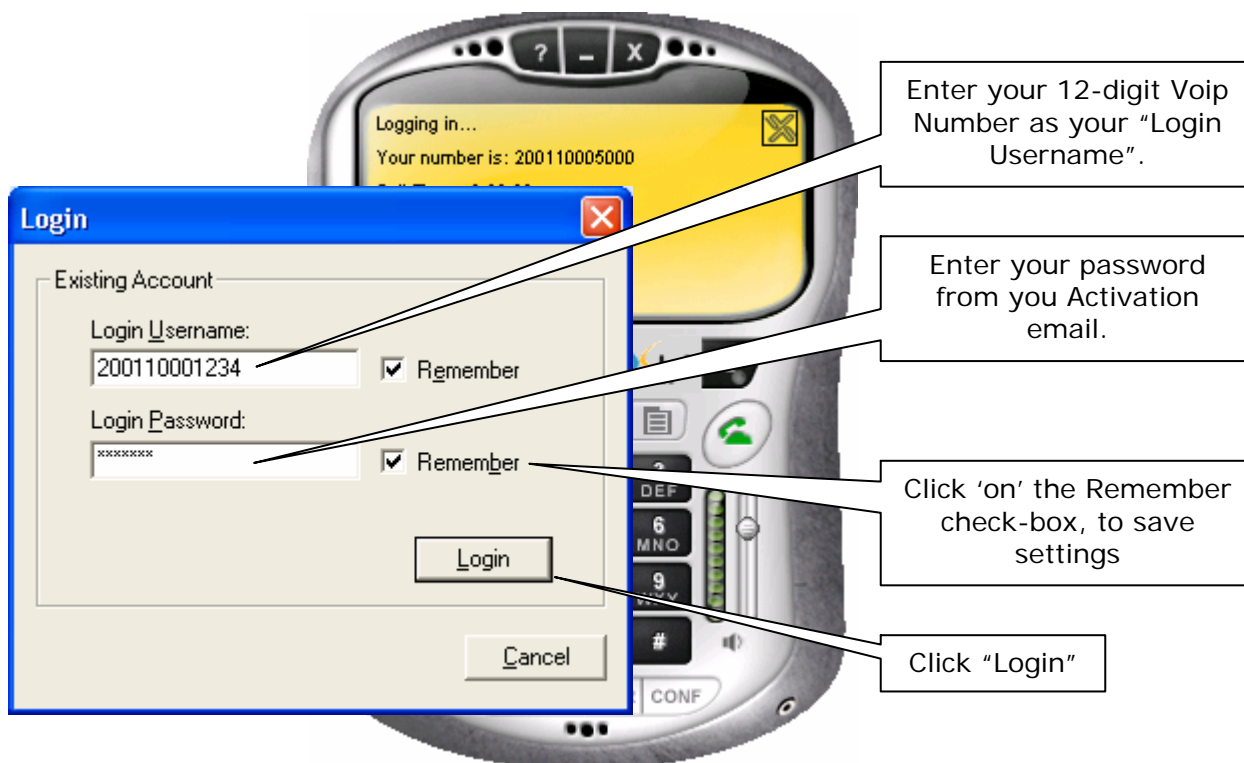
2 Install

- Make sure to exit any software applications that use sound, such as CD and media players.
- Run the softphone software obtained from your service provider. The filename should be an executable and be named something similar to: EP_Glaxy_SoftPhone_110g1.exe
- Follow the instructions for each step, progressing through the InstallShield Wizard until the installation is complete.

3 REGISTER: Configure it to make Calls

- The softphone displays a Checkbox **“Launch X-PRO Galaxy Telecom?”** It is recommended you check this box, then click **FINISH**, in order to immediately configure **the PC Phone**
- The **‘Audio Configuration Wizard’** runs **automatically on the initial startup.. Follow the instructions to setup your ‘audio’ levels, then....** If you need to run the “Audio Tuning Wizard” again.. ‘right-click’ anywhere over the applications and select ‘Audio Tuning Wizard’

NOTE: Make sure that you select the correct connection type at the end of the audio tuning wizard, as this greatly improves quality over lower-speed internet connections.



4

Make a Call

The **sofphone** provides a handy dial pad to quickly dial telephone numbers. Most calls can be dialed directly from the dial pad or by entering the numbers from your 'keyboard'. As the first few digits of the number are typed, when the faded number appears, press the TAB key and the sofphone auto-completes the faded numbers.



If you need further assistance, contact your Service Provider